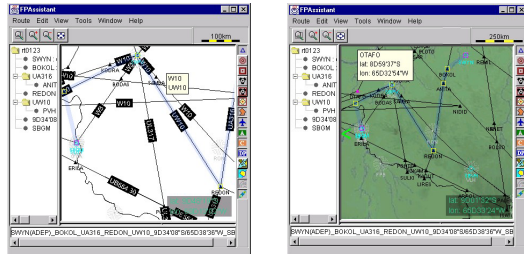


The MapBack™ Application Suite

The MapBack™ application suite provides an off-the-shelf solution to organizations that need to create value-added interfaces to large image databases.

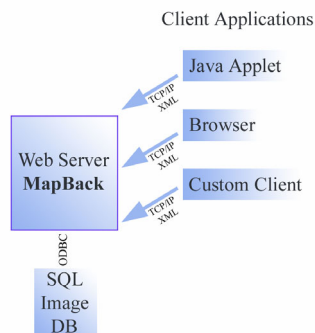
MapBack™ overcomes many of the problems inherent in such massive image applications: effective image storage and retrieval, intuitive image navigation, display of multiple resolution images, and on-the-fly integration and overlay of external data.

MapBack™ is ideal for any project that involves the retrieval of images and dynamic integration with external data. For example, MapBack™ has been used in an application that enables flight planners to instantly call-up map images and overlay flight plans on those images.

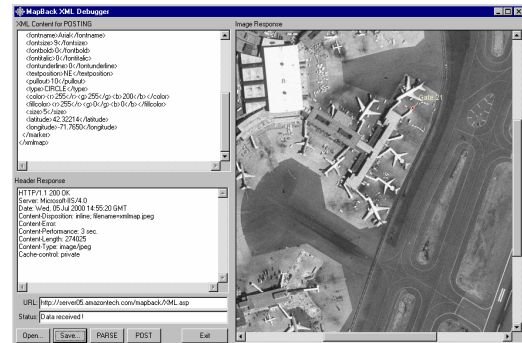


MapBack™ System Architecture

The MapBack™ application suite runs in a standard web server environment. Requests for images can originate from a variety of TCP/IP client applications, such as standard Web Browsers, custom client applications, or JAVA applets.



The image requests are expressed in XML format, in order to specify the required images characteristics such as: image size, image resolution, or GPS co-ordinates. XML is also used to dynamically inject data from outside sources such as vector layers or text annotations.



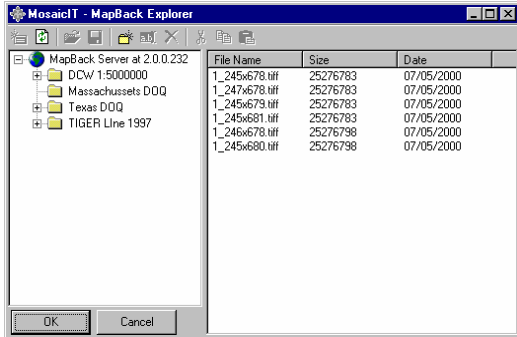
The image requests along with the XML parameters are routed by the MapBack™ application from the Web server to a standard SQL database that is used to store the image library. The optimized indexing provided by the SQL database means that image retrieval time is minimized, even for very large image databases. The appropriate image and external data (e.g. vector graphics) are then returned to the client application through the Web server.

The MapBack™ architecture therefore leverages the power of existing protocols and standards to enable the rapid deployment of a value added image database.

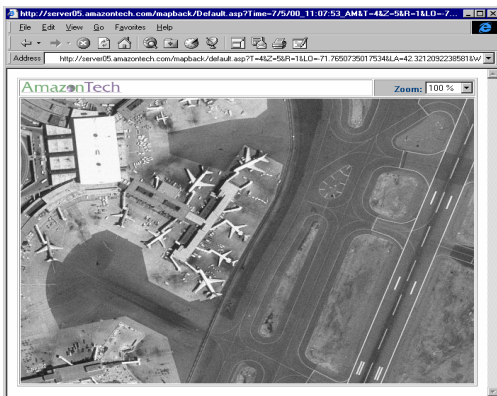
System Characteristics

Image Storage: MapBack™ uses a native connection to the MS SQL Server 7.0, or other ODBC data sources such as Oracle, Sybase or MS Access. Images are stored in relational tables as Large Binary Objects in a variety of configurations so that they can be tiled, scaled, filtered and layered upon request. This optimization of the database on the server side delivers greatly superior performance to that provided by traditional operating system file structures and minimizes the use of bandwidth. All standard image formats such as GIF, JPG, TIFF, BMP, PCX and CMP are supported.

Image Management: The MosaicIT™ application client for MapBack™ is used for automatic images slicing and sub-set editing.



Web Server: The MapBack™ application is tightly coupled with the Microsoft Internet Information Server. This means that image databases are accessed using the TCP/IP protocol, and SSL data cipher if required. Because MapBack™ uses a standard Web server configuration, it co-operates with standard HTTP packages, firewalls, and proxy servers without the need for special configuration or plug-ins.



Extensibility of MapBack™: With MapBack™ users can develop and integrate their own applications using any Active X compliant language such as Visual C++, Delphi, Visual Basic and Visual J++.

Customization Services

Maekeda as AmazonTech representative, can provide a variety of customization and support services to assist customers with successful deployment of MapBack™:

Consulting - Maekeda engineers will assist you to appropriately tile, sequence and index your image database in your chosen SQL database engine.

Image Sourcing – Maekeda can negotiate with authorized reseller for IKONOS high resolution satellite images and can assist customers to populate their MapBack™ database with appropriate data sets.

GIS Client Application - The MapBack™ application suite also includes a world class GIS application client from Manifold®, specially customized for the MapBack™ data server allowing easy vector data manipulation and enabling import and export capabilities to many other applications and data formats such as AutoCAD (DFX), ArcView (SHP) ArcINFO (E00), TIGER Line and MapINFO.

MapBack™, the solution for combining large image database with external data sources for dynamic display on the Internet

We encourage you to contact Maekeda to discuss how MapBack™ can help you deploy your image database.

Contact

Luis Soto
54 Atherton Road
Brookline, MA 02446
Phone: (617) 264-7200
E-mail: lsoto@maekeda.com
Website: www.maekeda.com

* Manifold® is a Registered Trademark of CDA International Ltd.
** MapBack™ and MosaicIT™ are Registered Trademarks of AmazonTech Co.